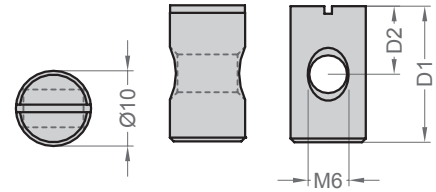


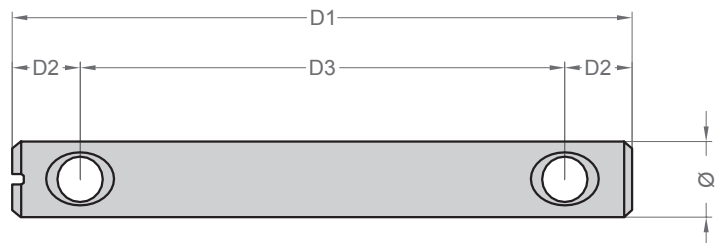


**QUERMUTTERBOLZEN M6 | ZENTRISCH**  
BARREL NUT M6 | CENTRIC



Artikelnr. Item no.	Gewinde Thread	D1 D1	Ø Ø	VE PU
100 050	M6	12,5	10,0	2.000
100 051	M6	14,0	10,0	2.000
100 052	M6	16,0	10,0	2.000
100 053	M6	18,0	10,0	1.000
100 054	M6	20,0	10,0	1.000
100 056	M6	30,0	10,0	500
100 057	M6	40,0	10,0	500
100 058	M6	50,0	10,0	300
100 059	M8	14,0	12,0	1.000
100 060	M8	20,0	12,0	500
100 061	M8	30,0	12,0	500
100 062	M8	40,0	12,0	300
100 063	M8	50,0	12,0	300
100 064	M8	60,0	12,0	300

**QUERMUTTERBOLZEN M6/M8 | MIT STOP**  
BARREL NUT, M6/M8, WITH STOP



Artikelnr. Item no.	Gewinde Thread	L1 L1	L2 L2	L3 L3	Ø Ø	VE PU
100 090	M6	48,0	8,0	32,0	10,0	500
100 091	M6	82,0	9,0	64,0	10,0	300
100 092	M8	60,0	14,0	32,0	12,0	300