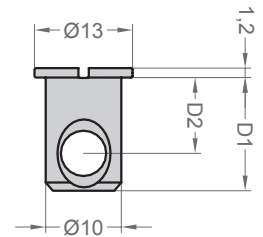
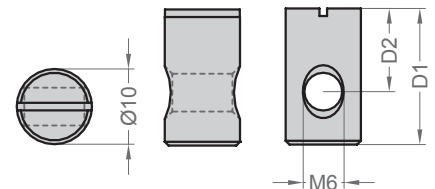


**QUERMUTTERBOLZEN M6 | MIT RAND**  
BARREL NUT, M6, WITH RIM



Artikelnr.	Gewinde	D1	D2	VE
Item no.	Thread	D1	D2	PU
100 093	M6	12,5	7,5	1.000
100 094	M6	15,0	10,0	1.000
100 095	M6	21,0	16,0	1.000

**QUERMUTTERBOLZEN M6 | EXZENTRISCH**  
BARREL NUT M6 | EXCENTRIC



Artikelnr.	Gewinde	D1	D2	Ø	VE
Item no.	Thread	D1	D2	Ø	PU
J88 094	M6	12,5	7,5	10,0	1.000
100 071	M6	13,0	8,0	10,0	1.000
J88 096	M6	14,0	9,0	10,0	1.000
100 073	M6	18,0	11,0	10,0	1.000