



## Channelline S

### Product advantages

- ▶ For flush mounting
- ▶ Glare-free light emission
- ▶ Recessed/surface-mounted profile

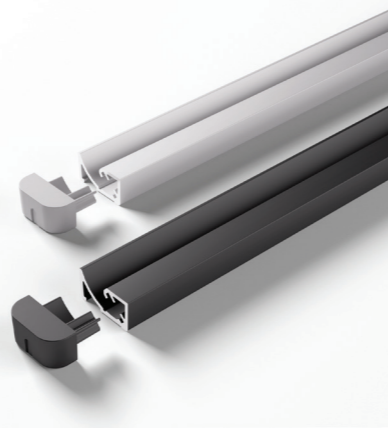
### Features

- ▶ Angled beam angle of approx. 90°
- ▶ Ideal for use with Versa Linear

### Application

- ▶ Cabinet interior lighting

### Technical details



### Recommended for:

- Versa Linear 600
- Versa Linear 1200



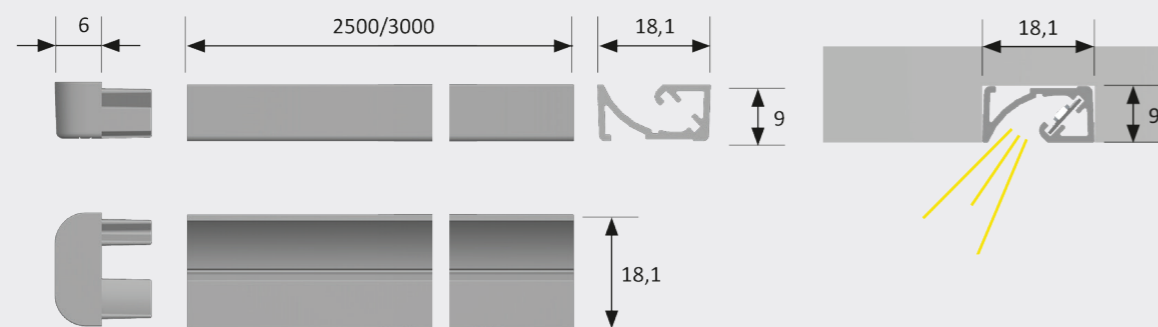
### Channelline S

	Aluminium / Opal	Black / Opal
2500 mm	55 966 51	55 966 55
2500 mm (set of 10)	55 966 61	55 966 65
3000 mm	55 966 02	55 966 06
3000 mm (set of 10)	55 966 12	55 966 16
End cap (set of 2) lacquered	26 157 01	26 157 05

### Accessories

Double-sided adhesive tape, 16x0.5 mm	36 261 02
---------------------------------------	-----------

### Assembly drawing



## Channelline S2

### Product advantages

- ▶ With filigree profile trim
- ▶ Glare-free and angled light emission
- ▶ Installation profile

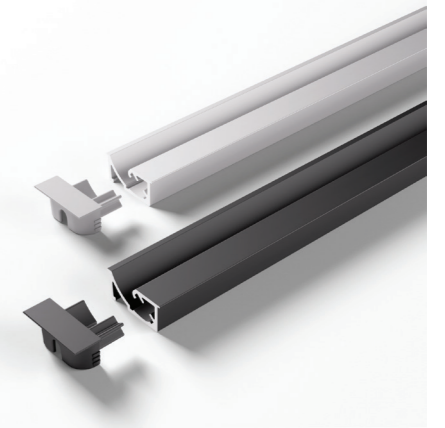
### Features

- ▶ Angled beam angle of approx. 90°
- ▶ Ideal for use with Versa Linear

### Application

- ▶ Cabinet interior lighting

### Technical details



### Recommended for:

- Versa Linear 600
- Versa Linear 1200



### Channelline S2

	Aluminium / Opal	Black / Opal
2500 mm	55 967 51	55 967 55
2500 mm (set of 10)	55 967 61	55 967 65
3000 mm	55 967 02	55 967 06
3000 mm (set of 10)	55 967 12	55 967 16
End cap (set of 2) lacquered	26 161 01	26 161 05

### Assembly drawing

