



Channelline H

Product advantages

- ▶ Surface-mounted profile for corner
- ▶ Almost rimless illuminated surface
- ▶ Round cover for wide light emission
- ▶ Can be screwed on both sides

Features

- ▶ Homogeneous light line with Versa Inside from 120 LED/m
- ▶ Very wide beam angle of approx. 90°

Application

- ▶ Furniture corners
- ▶ Kitchen midway sections

Order information

- ▶ Use of feeders and connectors in the profile possible
- ▶ To increase the luminosity, two Versa Inside can be glued next to each other

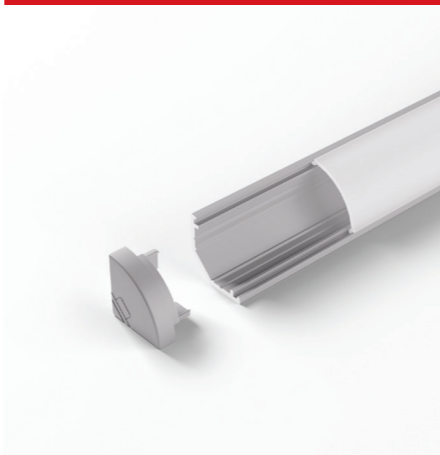
Channelline H

| | Aluminium / Opal |
|------------------------------|------------------|
| 2500 mm | 55 706 51 |
| 2500 mm (set of 10) | 55 706 61 |
| 3000 mm | 55 706 02 |
| 3000 mm (set of 10) | 55 706 04 |
| End cap (set of 2) lacquered | 25 559 01 |

Accessories

| | |
|--------------------------------------|-----------|
| Double-sided adhesive tape, 9x0.5 mm | 36 261 01 |
|--------------------------------------|-----------|

Technical details

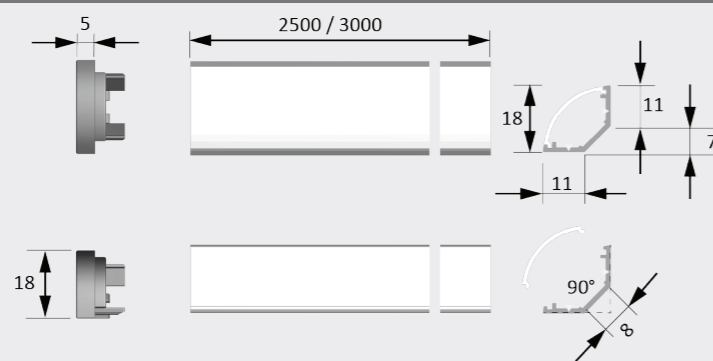


Recommended for:

- Versa Inside 600
- Versa Inside 1200



Assembly drawing



Channelline K2

Product advantages

- ▶ Ideal for bright applications
- ▶ Cover can be attached from above or inserted from the side
- ▶ With filigree profile trim

Features

- ▶ No visible LED dots
- ▶ Ideal for use in the kitchen
- ▶ Beam angle of approx. 70°

Application

- ▶ Niches
- ▶ Shelves
- ▶ Top floors

Order information

- ▶ Side cable outlet (see illustration) must be manufactured by the customer

Channelline K2

| | EDS / Opal | Black / Opal |
|------------------------------|------------|--------------|
| 2500 mm | 55 764 51 | 55 764 55 |
| 2500 mm (set of 10) | 55 764 61 | 55 764 65 |
| 3000 mm | 55 764 02 | 55 764 06 |
| 3000 mm (set of 10) | 55 764 12 | 55 764 16 |
| End cap (set of 2) lacquered | 25 749 21 | 25 749 25 |

Accessories

| | |
|---------------------------------------|-----------|
| Installation spring (2 units per set) | 25 242 11 |
|---------------------------------------|-----------|

Technical details



Recommended for:

- Versa Inside 1200



Assembly drawing

