



GlasLine

Product advantages

- ▶ Eye-catching lighting of 8 mm glass edge
- ▶ Can be shortened to desired length

Features

- ▶ High flexibility due to individual components
- ▶ Ideal for use with Versa Linear

Application

- ▶ 8 mm glass plates

Order information

- ▶ For light colour MultiWhite, MultiWhite accessories are required
- ▶ We recommend using a white glass pane (Optiwhite) with a frosted glass edge

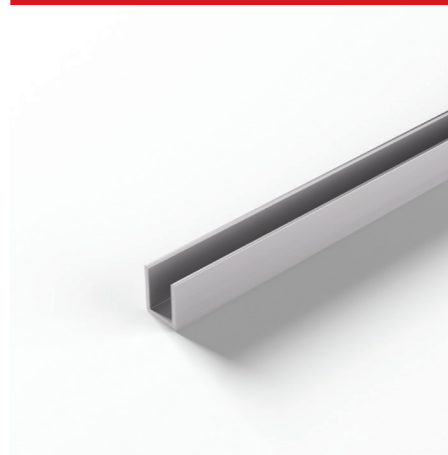
GlasLine

	Aluminium
1500 mm	18 720 81
3000 mm	18 720 01

Accessories

Versa Linear 600 12VDC 1200 mm mw	56 038 32
Versa Linear 600 12VDC 1200 mm nw	56 038 02
Versa Linear 600 12VDC 1200 mm ww	56 038 12
Versa Linear 600 12VDC 1200 mm xw	56 038 42
Ballast 20 W with Euro flat plug	31 016 01
M1 3-way distributor 180 mm	36 852 01
M1 6-way distributor 2000 mm	36 125 01
M1 extension lead 1800 mm	36 768 01

Technical details



Surface finish: Aluminium

Assembly drawing Can be shortened individually

