



## GlasLine Up&Down

### Product advantages

- ▶ Can be individually cut to length

### Features

- ▶ Fits perfectly with Versa Linear 600

### Application

- ▶ For easy DIY installation of effective lighting on the edge of an 8 mm glass floor
- ▶ Additional light emission upwards and downwards

### Order information

- ▶ We recommend using a white glass pane (Optiwhite) with a frosted glass edge
- ▶ MultiWhite accessories are required for MultiWhite light colour

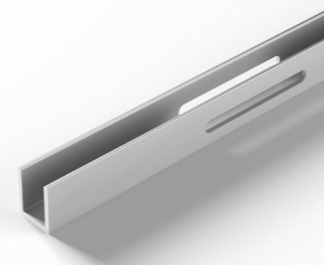
### GlasLine Up&Down

	Aluminium
564 mm	18 720 91
1164 mm	18 720 92

### Accessories

Versa Linear 600 12VDC 1200 mm mw	56 038 32
Versa Linear 600 12VDC 1200 mm nw	56 038 02
Versa Linear 600 12VDC 1200 mm ww	56 038 12
Versa Linear 600 12VDC 1200 mm xw	56 038 42
Ballast 20 W with Euro flat plug (6-way distributor)	31 016 01
M1 3-way distributor 180 mm	36 852 01
M1 6-way distributor 2000 mm	36 125 01
M1 extension lead 1800 mm	36 768 01

### Technical details



Luminaire type: Surface mounted light  
 Type of lighting: Accent lighting  
 Surface finish: Aluminium

### Assembly drawing

Can be shortened individually

